

Removal and Installation of Ultra STD/LED Tubing Assembly

A560-6362

Removal of Ultra STD/LED Tubing

Step 1



Prestige - DTP00511

Open lid and remove the plastic tray to access the inside of the unit.

OR



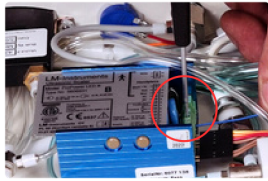
Ultimate - DTP00509

Remove the four Phillips screws on the bottom of each corner holding the delivery system to the top.

(Delivery system is the white metal box holding all the handpieces)

General Steps for both Prestige and Ultimate Dental Stations

Step 2



Disconnect colored wires.

Disconnect the black/green, white, red, and blue wires from the old handpiece tubing at the blue module box by unscrewing the small flathead screws holding the wires.

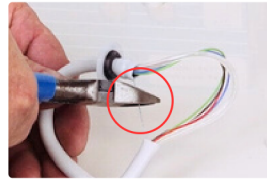
Step 3



Detach clear water line at water relay.

Detach the clear water line at the water relay by twisting and pulling back the small white sleeve clamp. Then, cut the tubing off the metal barb.

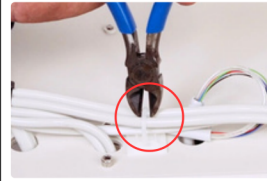
Step 4



Cut string that exits tubing from its attachment point.

Note this attachment point for securing the new string when installing the new tubing.

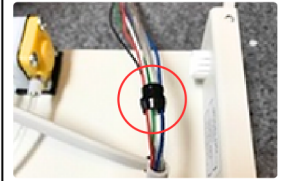
Step 5



Remove zip ties.

Any zip ties that impede tubing removal must be removed.

Step 6



Remove black plastic sleeve from tubing.

Squeeze or push out and remove the retaining black plastic sleeve from the tubing. This black sleeve is what prevents the tubing from being pulled out of the unit.

Step 7



Pull out entire tubing.

Pull the entire tubing down and out through the black rubber grommet on the delivery system.

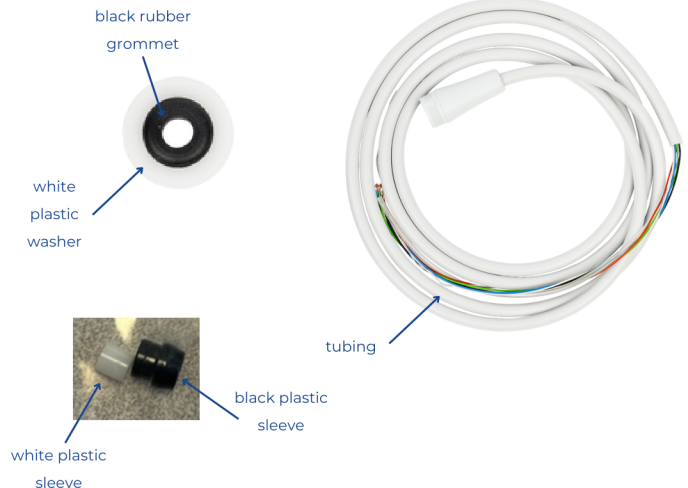
Step 8



Detach handpiece from tubing.

Hold the very bottom plastic piece at the handpiece's base. Unscrew the 1/2 inch wide plastic ring above the bottom plastic piece. Then, pull handpiece off its connection.

Helpful Parts to Remember



Need more help?

(800) 866-6881

customerservice@dentalaire.com

Flip to view Installation Instructions



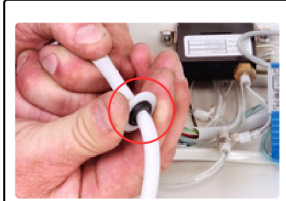
Removal and Installation of Ultra STD/LED Tubing Assembly

A560-6362

Installation of Ultra STD/LED Tubing

General Steps for both Prestige and Ultimate Dental Stations

Step 1 **Step 2** **Step 3** **Step 4** **Step 5**



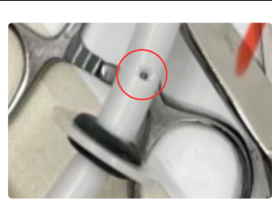
Insert new tubing.

Insert the new tubing up through the rubber grommet on the delivery system for DTP00509 (or through the plastic washer with the black rubber grommet, as shown above for DTP00511).



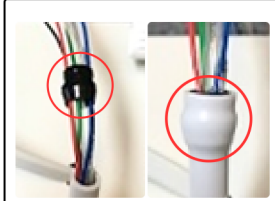
Set tubing length.

Pull enough scaler tubing into the unit until all tubings hang to the ground at the same length.



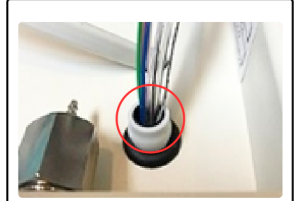
Shorten outer tubing.

Mark the tubing 1/2 inch above the rubber grommet. Pinch tubing, pushing water line and wires away from cutting area. Make a small cut at mark, then pull to complete the cut. Discard excess tubing.



Insert black plastic sleeve over the wires, waterline, and string.

Insert black plastic sleeve over the wires, waterline, and string with the tapered end facing down towards the tubing.



Secure tubing.

Push the black plastic sleeve inside the tubing to secure the tubing from pulling out from the bottom of the unit.

Step 6 **Step 7** **Step 8** **Step 9** **Step 10**



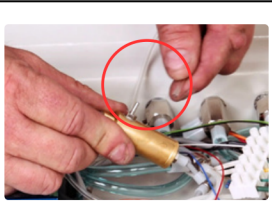
Route new wires and water line to original setup.

When routing new wires and water line, make sure that it is setup similar to when dental station was received.



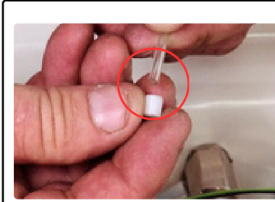
Tie off safety string.

Prestige Model: Tie to the chrome block where the polisher tubing attaches.
Ultimate Model: Tie to the scaler flow valve inside the delivery system. Ensure the string is taugth without any slack.



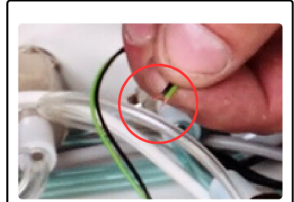
Route water line tubing to water relay.

Ensure the tubing reaches the water relay with a little extra length. Then, cut it to the proper length.



Slide white plastic sleeve onto water line tubing.

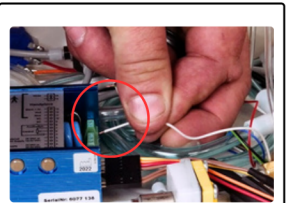
Use alcohol to assist in this step. Push the tubing onto the barb about 3/4" of the way. Then, slide the plastic sleeve over the tubing and barb.



Twist bare wire ends.

Twist the bare wire ends for a secure connection.

Step 11 **Step 13**



Insert wires into blue module box.

Refer to the instructional wiring diagram when inserting the wires (white, black/green, red, and blue) into the blue module box.



Leave a loop of wire and water line where tubing enters unit.

Make sure to leave a loop of wire and water line where the tubing enters the unit to ensure the wires and water line can move freely if the tubing is pulled.

Need more help?

(800) 866-6881

customerservice@dentalaire.com

[Flip to view removal Instructions](#)

